

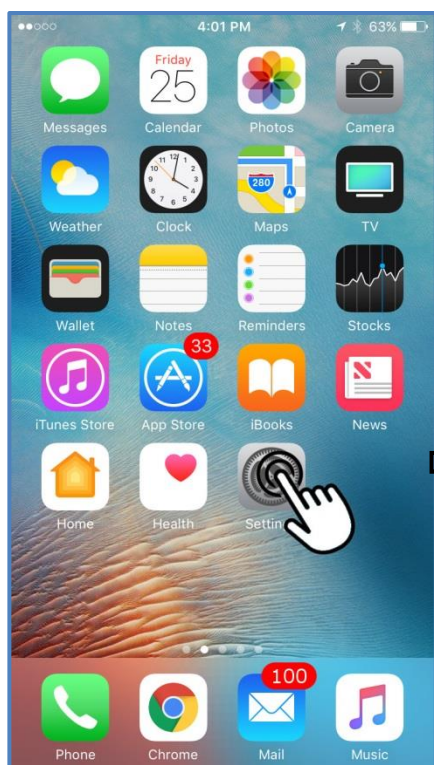
jControl Guide: Apple® iPhone®

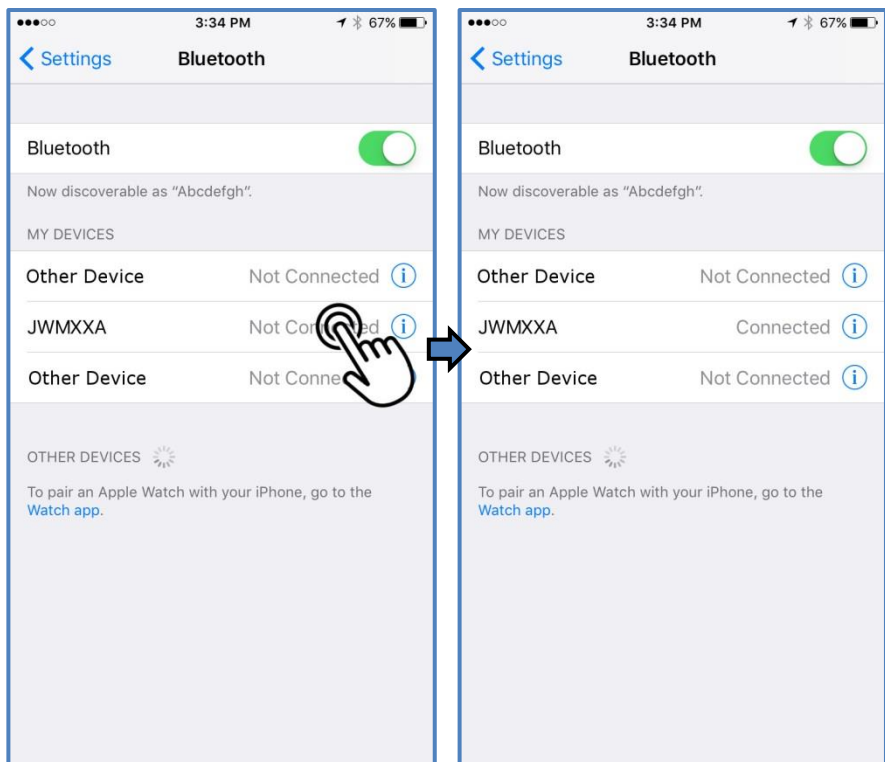
Connecting jControl to your head unit

The jControl app requires a Bluetooth connection with your head unit in order to function. The app will not be able to connect to the head unit unless your mobile device is already connected by Bluetooth.

Pairing: If you have never connected your mobile device to your head unit before, you must first pair the mobile device. Refer to your head unit Owner's Manual or Quick Reference Guide for the specific steps to pair your mobile device.

Connecting: Just because your mobile device is now paired to the head unit does not mean they are always connected. After the initial pairing of your device, it should automatically connect to the head unit. In future sessions, you can easily connect again from the Bluetooth settings of your mobile device, as shown below.





Note: The head unit will connect to the last connected device upon power on, as long as that device is within range and Bluetooth is on.

After your mobile device is connected to your head unit, open the jControl app. The app should now connect to your head unit within a few seconds. If you are not able to connect, refer to the [Troubleshooting](#) section.

jControl Basic Operation

Home Screen



Info Page

Current Mode

Press to show Master Volume adjustment or Power/Source/Settings

Power On/Off the head unit

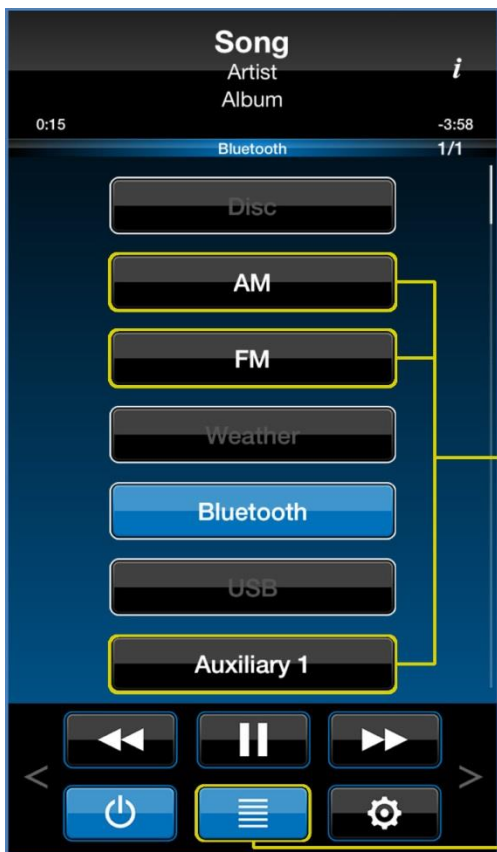
Master Volume control



Press to adjust Master Volume level, press and hold for rapid adjustment

Note: Some models may only have Zone volume controls (found in Audio Settings) and no master volume control.

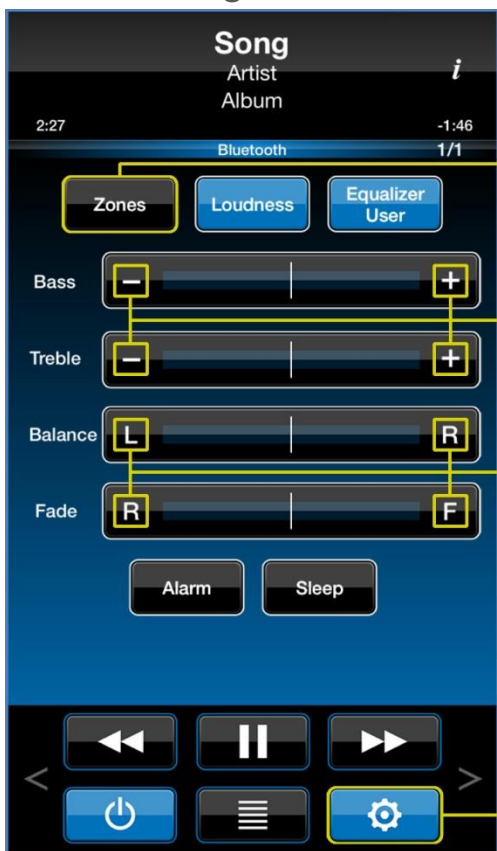
Source Selection



Press to change to the selected mode. Swipe up/down to scroll.

Press to bring up the source selection list

Audio Settings



Press to access Zone volume controls if available on your head unit

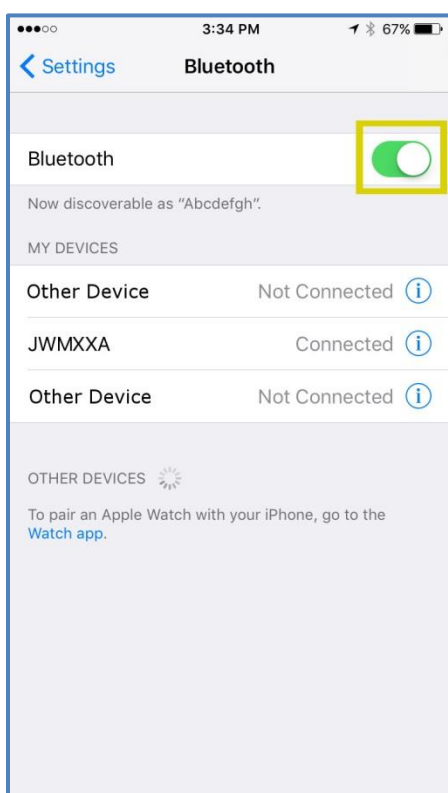
Press to adjust Bass and Treble

Press to adjust Balance and Fade

Press to access the audio settings

Troubleshooting Steps

1. Check the Bluetooth settings on your mobile device to confirm you are connected to the head unit.
2. Ensure proper Bluetooth connection by streaming music from your phone to the head unit.
3. From your mobile device settings, turn off Bluetooth by tapping the button shown below. Tap again to turn Bluetooth back on. Tap on the head unit name under “**MY DEVICES**” to reconnect to the head unit.



4. If you still cannot get the app to function, unpair the head unit from your phone (tap the “i” icon next to the device and then tap “**Forget**”). Perform a factory reset on the head unit. Repeat the pairing steps according to the Owner’s manual or Quick Reference Guide.



Apple and iPhone are trademarks of Apple Inc., registered in the U.S. and other countries.



ASA Electronics Corporation

www.asaelectronics.com

©2017 ASA Electronics Corporation

v.083017